

2+
YEARS

TOOLS REQUIRED

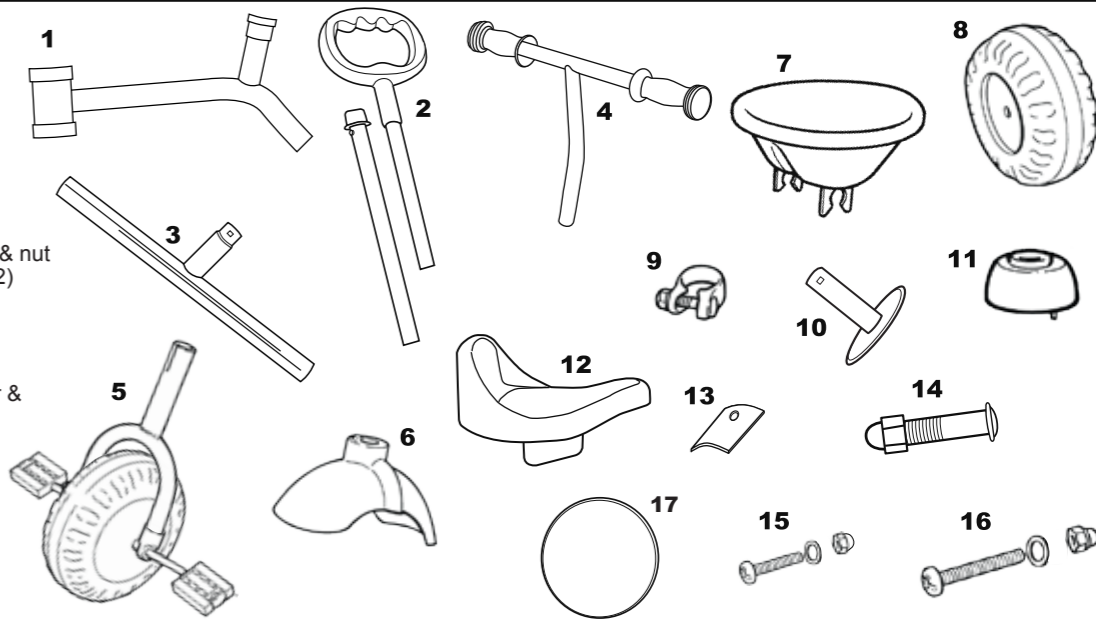
NOT SUPPLIED

8mm, 10mm and 13mm



CONTENTS

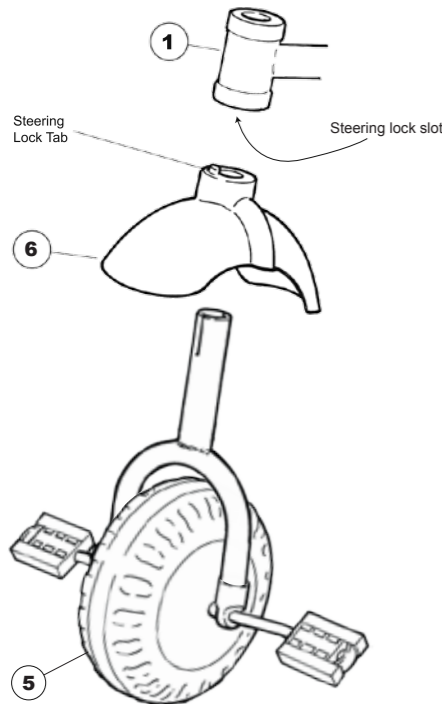
1. Main frame
2. Parent pole
3. Rear frame
4. Handlebar
5. Front fork assembly
6. Mudguard
7. Bucket
8. Rear wheel (x2)
9. Steering clamp, bolt & nut
10. Rear wheel cover (x2)
11. Clamp cover
12. Seat
13. Seat hole cover
14. Seat bolt & nut
15. Medium bolt, washer & nut (x2)
16. Long bolt, washer & nut
17. Plaque



My First Trike

1. FRONT WHEEL

1. Slide the upper part of the front fork through the hole in the mudguard and the hole in the head of the main frame – make sure that the steering lock tab on the mudguard faces forward and locates into the slot in the underside of the frame head.

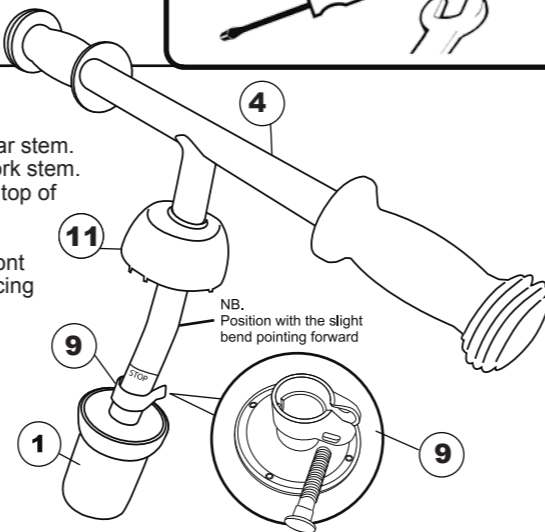


2. HANDLEBARS

1. Slide the clamp cover up onto the handlebar stem. Slide the steering clamp onto the top of the fork stem. Then push the handlebar stem down into the top of the fork stem as far as the STOP marks.

2. Set the handlebars at right angles to the front wheel and, with the clamp adjusting barrel facing rearwards, tighten the clamp and ensure the handlebars are locked into the forks.

3. Slide the cover down over the clamp ensuring the lugs locate into the slots in the frame head.

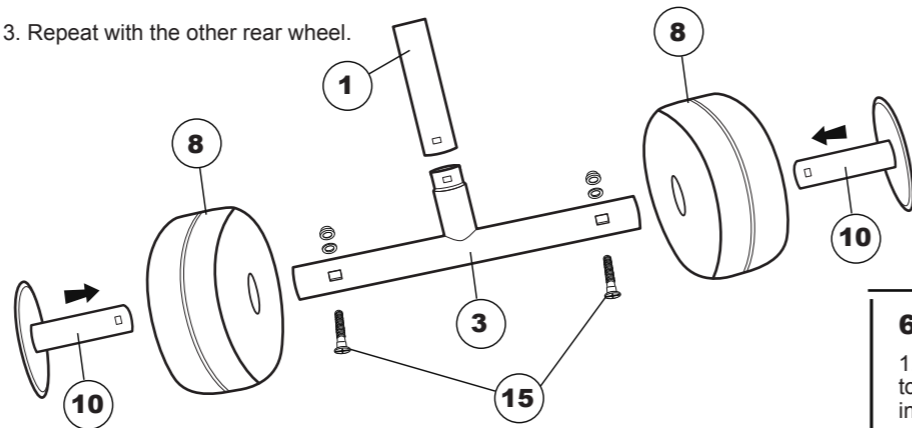


3. REAR WHEEL ASSEMBLY

1. Push one rear wheel cover through one of the rear wheels and then into one end of the rear frame (with the recess in the wheel facing outwards). Align the hole in the rear wheel cover with the holes in the rear frame.

2. Push a medium sized bolt through the aligned holes of the rear frame and rear wheel cover. Put a washer on the bolt, add a nut and tighten.

3. Repeat with the other rear wheel.



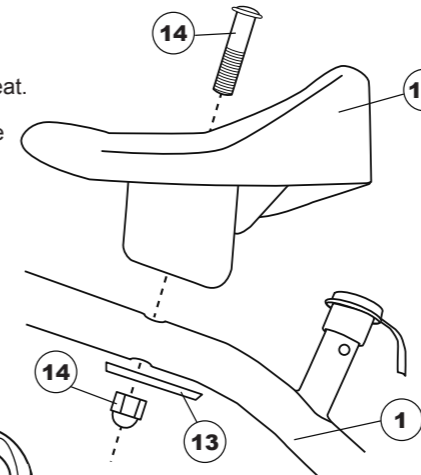
5. SEAT ASSEMBLY

1. Push the seat bolt through the hole in the seat.

2. Push the bolt through one of the holes in the main frame. There are two holes in the main frame, the front one is used for a smaller child and the rear one for a taller child.

3. Locate the seat hole cover over the bolt ensuring that the peg on the other side goes into the unused hole.

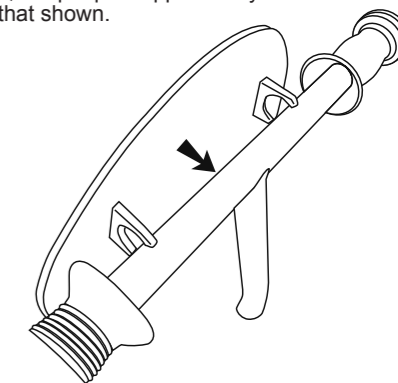
4. Add the nut and tighten.



ATTACHING THE PLAQUE

1. Clip the plaque onto the handlebar.

Please note, the plaque supplied may differ from that shown.

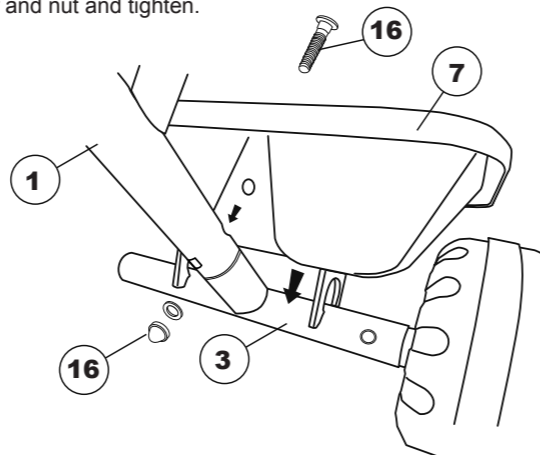


4. BUCKET ASSEMBLY

1. Push the rear frame into the main frame then locate the bucket so that the holes in all three parts are aligned.

2. Push the long bolt through the hole in the bucket and then through the holes in the frame and rear frame.

3. Add the washer and nut and tighten.



6. PARENT POLE ASSEMBLY

1. Push the two pieces of the parent pole together ensuring the spring clip locates into the retaining hole.

2. Push the parent pole into the main frame bracket ensuring the spring clip locates into the retaining hole.

3. When the parent pole is not required, remove the pole by pressing the spring clip and pulling out. Close the end cap.

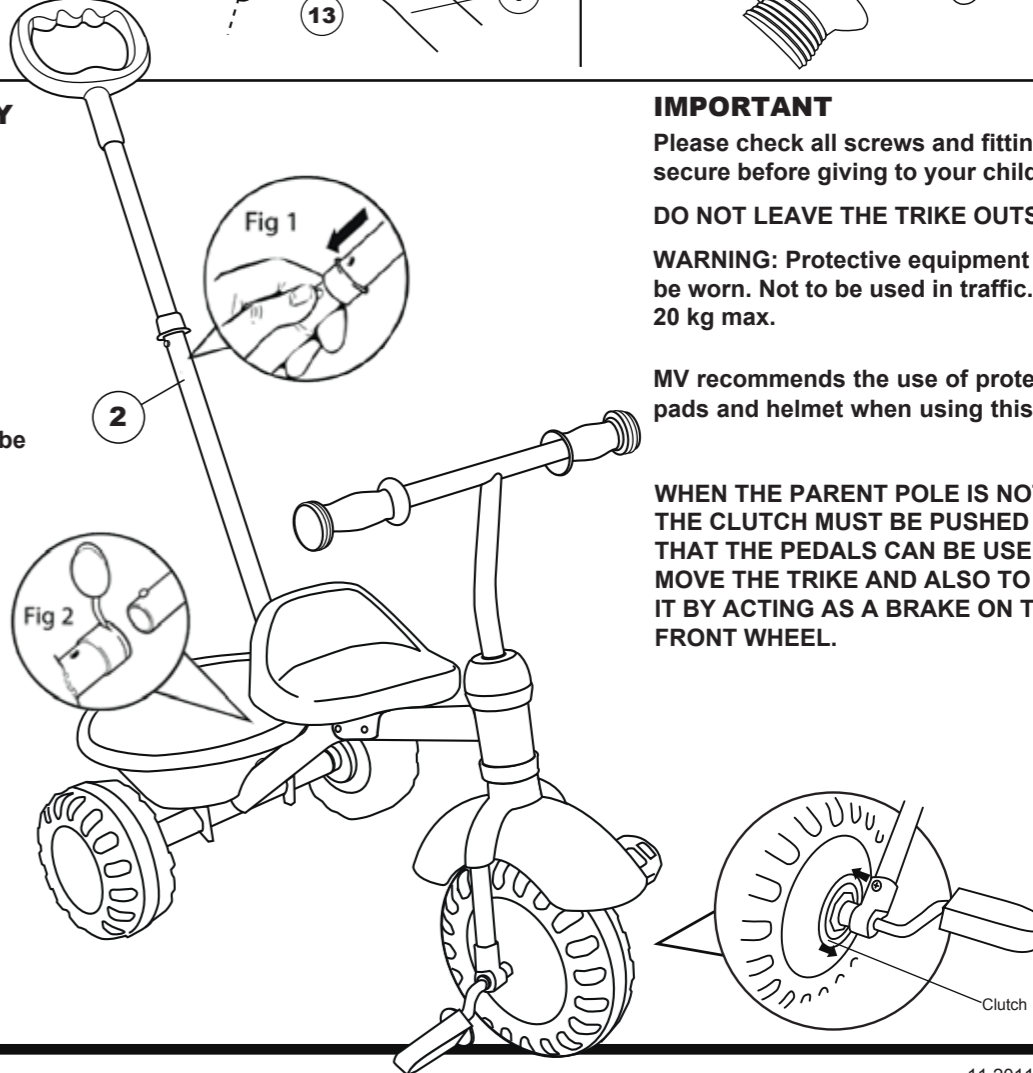
WARNING: The Trike should never be used with the parent pole partially assembled.

7. USING THE CLUTCH

The clutch on the front wheel is used to change the way in which the pedals are used.

1. When using the parent pole, pull the clutch **COMPLETELY** out, away from the front wheel. This allows the trike to be pushed without the pedals moving.

2. When the parent pole is not in use, push the clutch **COMPLETELY** in, towards to wheel. This allows the trike to be moved by pedalling.



IMPORTANT

Please check all screws and fittings are secure before giving to your child.

DO NOT LEAVE THE TRIKE OUTSIDE

WARNING: Protective equipment should be worn. Not to be used in traffic. 20 kg max.

MV recommends the use of protective pads and helmet when using this product.

WHEN THE PARENT POLE IS NOT IN USE, THE CLUTCH MUST BE PUSHED IN SO THAT THE PEDALS CAN BE USED TO MOVE THE TRIKE AND ALSO TO STOP IT BY ACTING AS A BRAKE ON THE FRONT WHEEL.

THIS TRIKE TO BE ASSEMBLED BY AN ADULT DESIGN SPEC. MAY VARY

IMPORTANT OWNER'S INFORMATION PLEASE READ BEFORE ALLOWING YOUR CHILD TO RIDE THE TRIKE PLEASE REMOVE ALL PACKAGING BEFORE GIVING TO YOUR CHILD.

FOR CHILD'S SAFETY

Re-check all screws, nuts and bolts are firmly tightened. Make sure that your child is capable of riding this trike. Always supervise children when they are riding. It is important that they are never unattended. This trike is designed for a single rider and should never be ridden by more than one child at a time. Only allow child to ride on a flat surface. Do not ride near a slope, stair or anywhere a child may fall.

DO NOT STAND, SIT OR PUT EXCESSIVE PRESSURE ON THE BUCKET.

DISTRIBUTED BY



Please retain this leaflet for reference to the manufacturer. Made in China to European Standards.



The CE mark denotes compliance with the standards laid down by the EC (European Community).



CUSTOMER SERVICES

MV has taken great care to ensure that this toy has reached you in good condition. Should you have a query, please contact: customer.services@mvsports.com where your query will be dealt with promptly. Alternatively, you can call on 0870 8404255.

MV SPORTS & LEISURE LTD.
35 TAMESIDE DRIVE
CASTLE BROMWICH, BIRMINGHAM
B35 7AG - UK
www.mvsports.com