



**VENUS - M08605-02**  
FOR CHILDREN AGED 3 TO 10 YEARS

## SAFETY GUIDELINES

### Warnings

**Only for domestic use. This product has not been designed for commercial use in play centers, nurseries etc.**

**Only suitable for outdoor use.**

**Not for children with a body weight over 45kg. Only one child per seat at any one time.**

**The total weight on the product at any one time must not exceed 145kg.**

**Not for children under 3 years due to small component which may cause choking hazard.**

This equipment must be assembled and checked by an adult. Adult supervision is required at all times.

Check all nuts, bolts and fittings for tightness and tighten if required.

Check all coverings for bolts and sharp edges and replace when required.

Check swing seats, chain, ropes and other means of attachments for evidence of deterioration. Replace when required in accordance with the manufacturers instructions.

Place the product on level surface at least 2 metres from any structure or obstruction such as a fence, garage, house, wall, overhanging branches, laundry line or electrical wires.

The items MUST be anchored firmly into the ground

DO NOT install the product over concrete, asphalt or any hard surface.

DO NOT orientate the product directly towards the sun

Leave all fittings finger tight until assembly is complete, for ease of construction. Then tighten firmly.

Children should not wear cycle helmets whilst on this equipment

Do not allow children to stand on the swing or glider seats

Do not allow the children to get off the swings or glider while they are still moving

Do not twist swing ropes or wrap them over the top bar

Do not allow loose, hooded or baggy clothes to be worn since children can get trapped and may be unable to free themselves.

Do not allow children to climb on parts of this equipment intended for this purpose

Do not allow children to wander into the play area when the equipment is in use

Do not allow children to slide head first down the chute or walk up the chute

Glider seats must not exceed an angle of 60 degrees from the ground

Regularly check the item for wear and damage, removing the item from use when necessary until replacement parts are fitted.

Failure to assemble and maintain this item as per instruction may cause injury to the user.

The minimum clearance between the swing seat and ground level should be 350mm.

Please contact our customer services department if you have any problems.

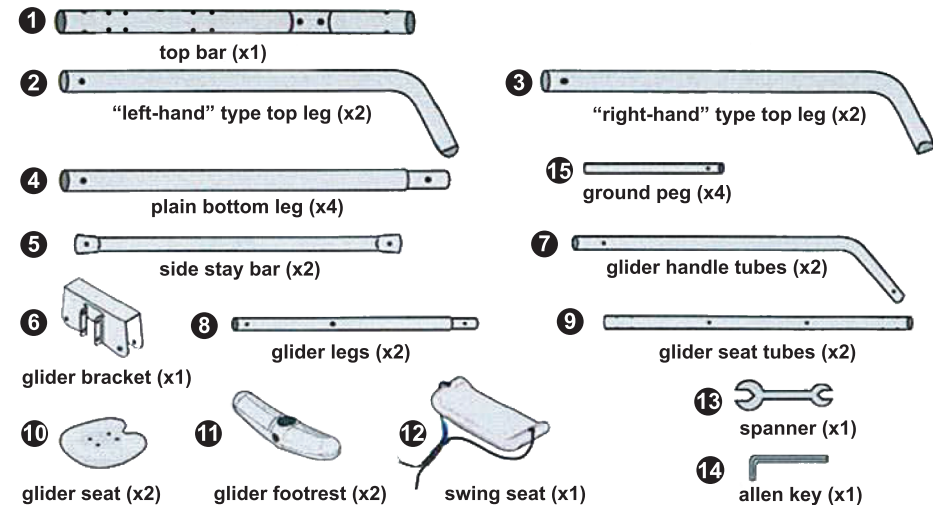
Inspect all parts of this product every 6 months following purchase. If any parts look worn or you find any problems, please contact us for replacements and do not use product until problem has been corrected. Hedstrom recommends replacing the plastic swing rope clamps every 2 years even if there is no sign of deterioration.

Do not modify this item.

Please keep the instructions in a safe place for future reference

Conforms to EN71

## SWING PARTS LIST



**IMPORTANT:** Make sure you read the safety notice on the front page and always supervise children while they are playing on the equipment. Once assembly is completed carefully check equipment. In the unlikely event that you do find any problems, please contact us. Do not allow children to use this product until the problem has been corrected.

